



CONNECT AND PROTECT

Non-Metallic Box Program

Non-Metallic Box Program



Specialty Boxes



Adjustable Box

nVent GARDNER BENDER is adding 13 new boxes and accessories to provide a complete program of non-metallic box solutions for residential and commercial applications. The new items consist of TufBox heavy wall boxes, special mounting boxes, low voltage brackets and cover plates. All items are qualified to industry standards and meet the most common applications.

- ✓ Constructed of Hi-Grade Materials enhances performance, durability and ease of installation
 - ✓ Qualified to Industry Standards - UL and ETL
 - listings vary by box type
 - UL514C or UL263 Fire Rated*
- *Ratings vary by box and accessory type



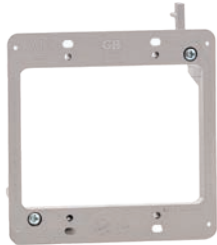
Triple Gang Box

New Boxes & Accessories 2023

COVERS & BRACKETS



BRKT-RSLV



BRKT-RDLV



COVER-RDW



COVER-SQG



COVER-RDG

TUFBOX



BOX-NSH22N



BOX-RDH34N



BOX-NDH35N



BOX-NCH25

SINGLE GANG



BOX-RS20N



BOX-NSA21



BOX-NSF18N

TRIPLE GANG



BOX-NT44

Accessories

COVERS

- PVC constructed standard round & square covers UL514C listed
- COVER-RDW 5 in available in white & includes mounting screws, paintable, NEMA OS-2
- COVER-RDG 4 in round cover, available in gray and fits standard 4 in ceiling box
- COVER-RDG 4 in square cover, gray, for use with 2-gang ENT box or 4 in square box, screw hole mounting design



COVER-RDG



COVER-RDW



COVER-SQG



Type	Item #	Mounting	Height (in)	Width (in)	Length (in)	UL Rating	Qty	Case Qty
Cover	COVER-RDG	1 screw	4.17	4.17	0.09	UL514C	1	30
Cover	COVER-RDW	2 screws	5.27	5.27	0.19	UL514C	1	12
Cover	COVER-SQG	2 screws	4.00	4.00	0.10	UL514C	1	25

BRACKETS

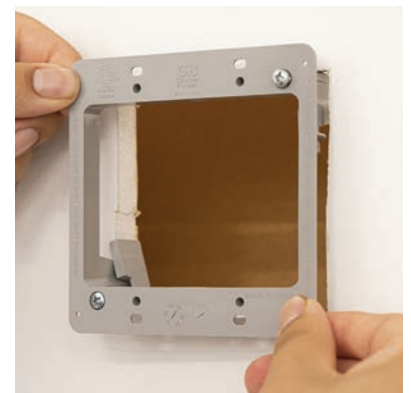
- For use with low voltage devices and covers
- Equipped w/ swing clamps for easy mounting in drywall
- High performance polycarbonate construction
- Low Voltage Class 2 Use Only
- ETL listed & conforms to UL subject 2269
- Certified to CSA Std. C22.2 no.18.2
- Not rated for firewall applications



BRKT-RSLV



BRKT-RDLV



Type	Item #	Mounting	Height (in)	Width (in)	Length (in)	UL Rating	Qty	Case Qty
Bracket	BRKT-RDLV	Adjustable Swing Clamps	4.29	4.31	1.59	UL514C	1	6
Bracket	BRKT-RSLV	Adjustable Swing Clamps	4.3	2.5	1.59	UL514C	1	12

nVent GARDNER BENDER TufBox Heavy Wall Boxes

TufBox heavy wall boxes are designed to be more rigid than standard boxes to resist cracking, breaking or flexing. Molded with specially formulated thermoplastic material, these boxes will hold up in extreme conditions. Available in the most common sizes and with the same mounting and wire entry features as standard boxes.

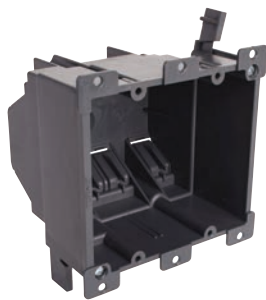
- ✓ Larger wire fill capacity
- ✓ Designed to nest for easy carrying and storage
- ✓ Non-corrosive and non-conductive
- ✓ Standard mounting and wire entry features
- ✓ Qualified to industry standards of UL514C and UL263 2-hour fire rating
*except BOX-NCH25 ceiling box that is not fire rated



BOX-NSH22N



BOX-NCH25



BOX-RDH34N



BOX-NDH35N



Type	Item #	New/Old	VOL (IN ³)	Mounting	Height (in)	Width (in)	Length (in)	UL Rating	Qty	Case Qty
Ceiling	BOX-NCH25	New Work	24.5	Nails	4.00	6.47	2.94	UL514C	1	48
Double	BOX-NDH35N	New Work	34.5	Nails	7.12	4.10	3.42	UL514C and UL263	1	48
Single	BOX-NSH22N	New Work	22	Nails	4.56	2.97	3.70	UL514C and UL263	1	96
Double	BOX-RDH34N	Old Work	34	Adjustable Swing Clamps	4.20	4.10	3.42	UL514C and UL263	1	24

Single Gang Boxes

- Captive zinc coated nails for quick and easy mounting
- Equipped with knockouts for entry of NM-B cable
- Durable high grade PVC Thermoplastic resists breaking

- UL Classified for 2-Hr fire rating (UL263 2-HR-W) *Except BOX-NSA21 and BOX-RS8
- UL514C Listed



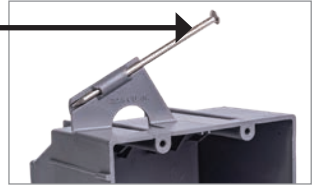
BOX-NS18N

BOX-NS20N

BOX-NS22N

ZINC PLATED NAILS

Pre-installed Zinc plated for rust protection



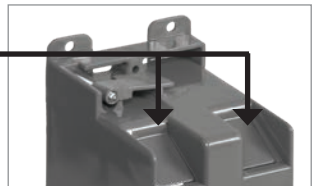
FLANGES & ADJUSTABLE SWING CLAMPS

for convenient mounting into existing walls



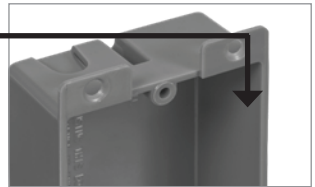
NM CABLE CLAMPS

For entry of NM-B cable and additional cable support



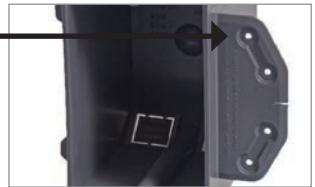
SHALLOW DEPTH

is commonly used in RVs, mobile homes, kitchen islands, and more



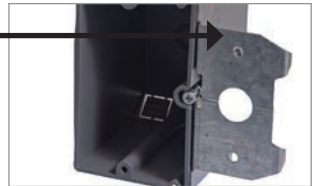
MOLDED BRACKET

allows the box to be mounted with nails, screws, or non-metallic staples



FLUSH MOUNTING APPLICATION

corrosion resistant plated metal bracket for flush mounting applications



BOX-RS20N



BOX-RS14N



BOX-RS8
Shallow



BOX-NSA21
Adjustable



BOX-NSF18N
Side Mounting Flange

Type	Item #	New/Old	VOL (IN ³)	Mounting	Height (in)	Width (in)	Length (in)	UL Rating	Qty	Case Qty
Single	BOX-NS18N	New Work	18	Nails	2.88	2.38	3.69	UL514C and UL263	1	100
Single	BOX-NS20N	New Work	20.3	Nails	3.31	2.38	3.75	UL514C and UL263	1	100
Single	BOX-NS22N	New Work	22.5	Nails	3.5	2.38	3.75	UL514C and UL263	1	100
Single	BOX-NSA21	New Work	21	Nails or Screws	3.70	4.10	3.11	UL514C	1	28
Single	BOX-NSF18N	New Work	18	Nails/Screws/Staples	3.70	2.25	2.74	UL514C and UL263	1	48
Single	BOX-RS14N	Old Work	14	Adjustable Swing Clamps	2.81	2.25	3.75	UL514C and UL263	1	150
Single	BOX-RS20N	Old Work	20	Adjustable Swing Clamps	4.30	2.32	3.69	UL514C and UL263	1	48
Single	BOX-RS8	Old Work	8	Mounting Flange	1.25	2.38	3.63	UL514C	1	25

Double & Triple Gang Boxes

- Captive zinc coated nails for quick and easy mounting
- Dual Gang: NM cable clamps to secure wires
- Durable high grade PVC Thermoplastic resists breaking

- UL Classified for 2-Hr fire rating (UL263 2-HR-W)
*Except BOX-NT44
- UL514C Listed



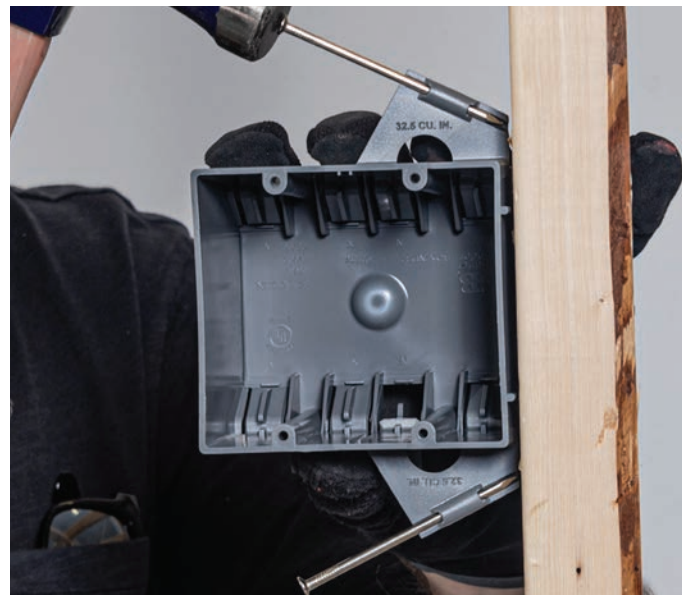
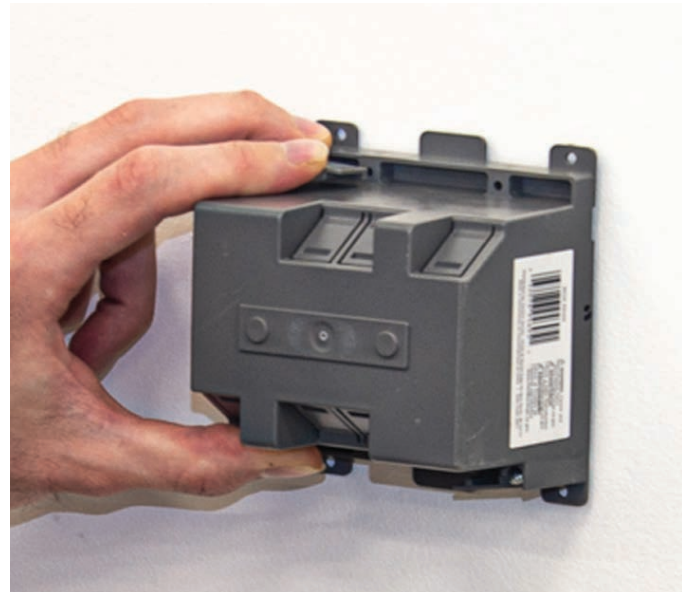
BOX-ND32N



BOX-RD25N



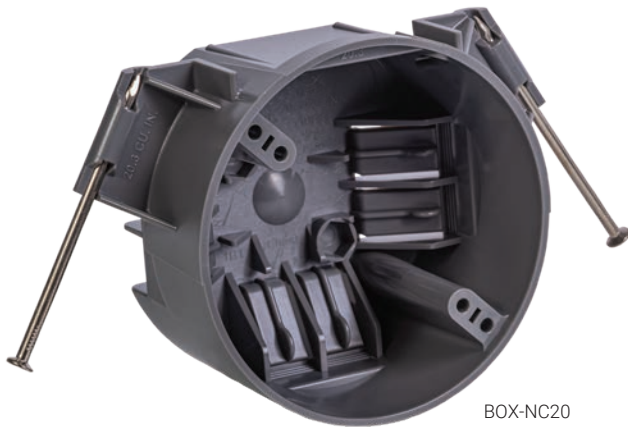
BOX-NT44



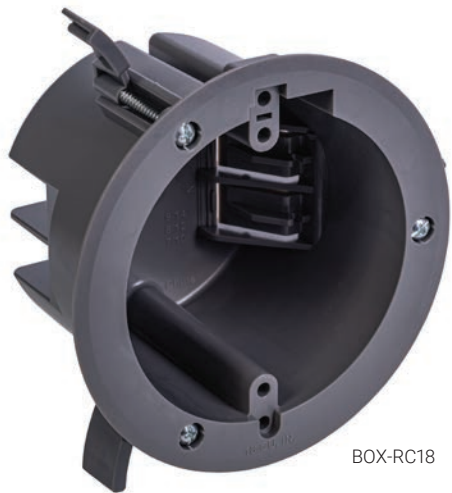
Type	Item #	New/Old	VOL (IN ³)	Mounting	Height (in)	Width (in)	Length (in)	UL Rating	Qty	Case Qty
Double	BOX-ND32N	New Work	32.5	Nails	3.06	4.00	3.69	UL514C and UL263	1	40
Triple	BOX-NT44	New Work	44	Nails	7.11	5.81	2.65	UL514C	1	24
Double	BOX-RD25N	Old Work	25	Adjustable Swing Clamps	3.75	4	2.87	UL514C and UL263	1	30

Ceiling Boxes

- Captive zinc coated nails for quick and easy mounting
- Durable high grade PVC Thermoplastic resists breaking
- NM cable clamps to secure wires
- UL514C Listed



BOX-NC20



BOX-RC18



Type	Item #	New/Old	VOL (IN ³)	Mounting	Height (in)	Width (in)	Length (in)	UL Rating	Qty	Case Qty
Ceiling	BOX-NC20	New Work	20	Nails	4	4	2.31	UL514C	1	75
Ceiling	BOX-RC18	Old Work	18	Adjustable Swing Clamps	4	4	2.68	UL514C	1	75

USA

Tel 800.624.4320



Our powerful portfolio of brands:

CADDY ERICO HOFFMAN ILSCO RAYCHEM SCHROFF